


若い恋は自転車に乗って(独奏楽器)

作詞・作曲・編曲：南波照間 雅彦

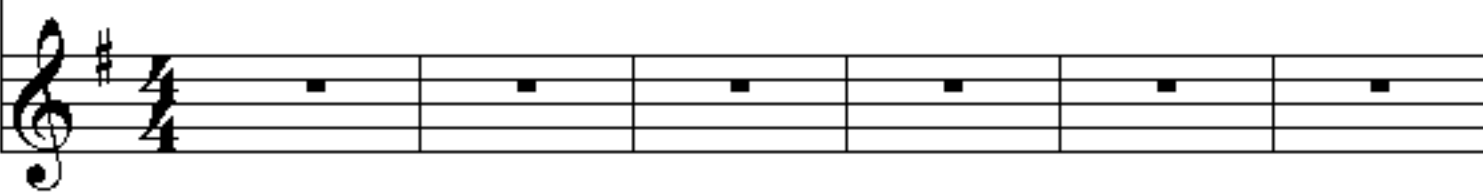
♩=110

G

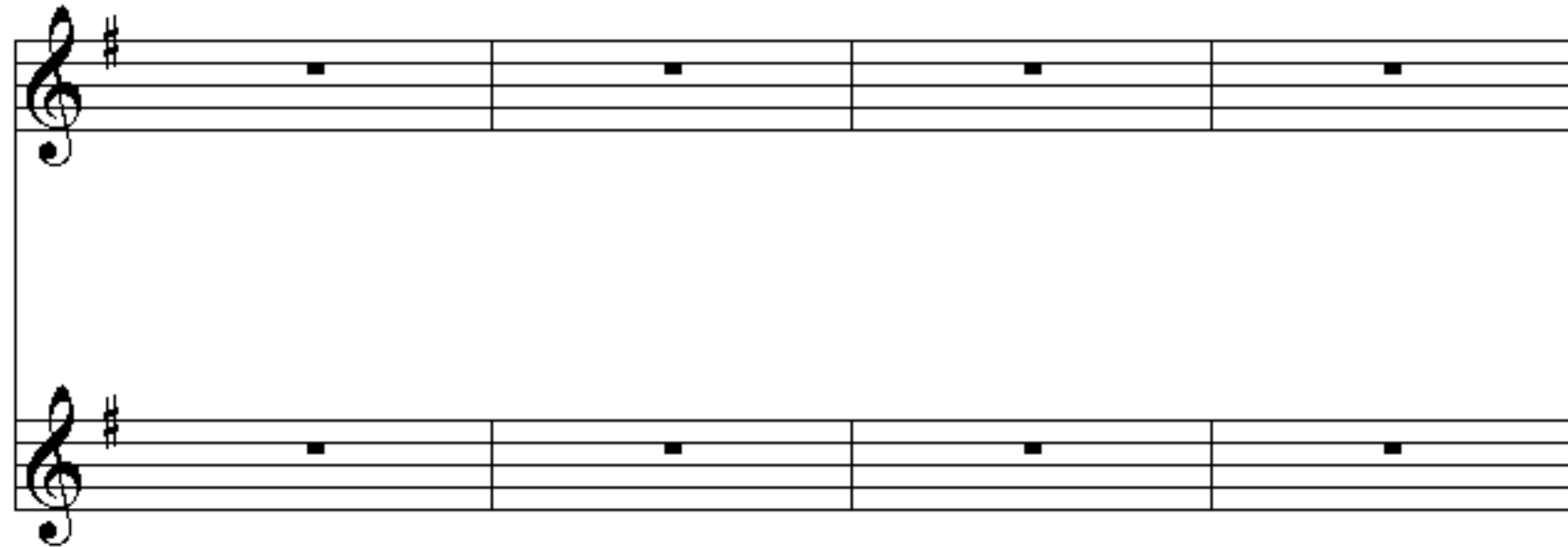
Trumpet1



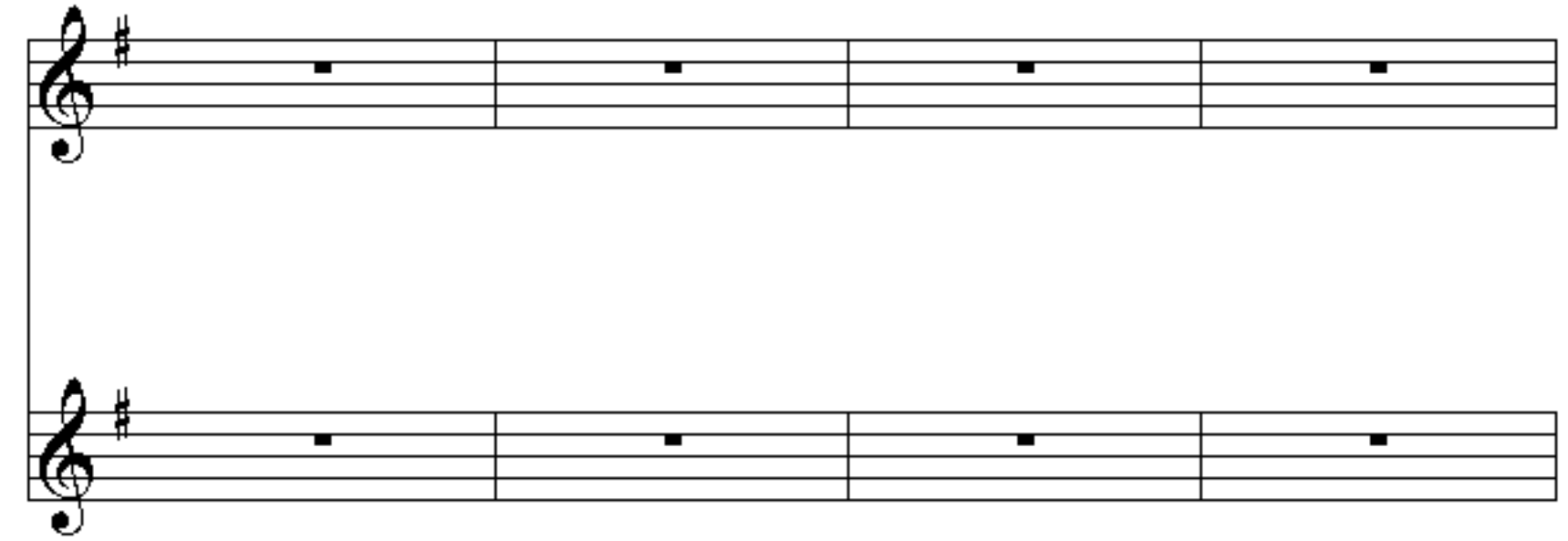
Trumpet2



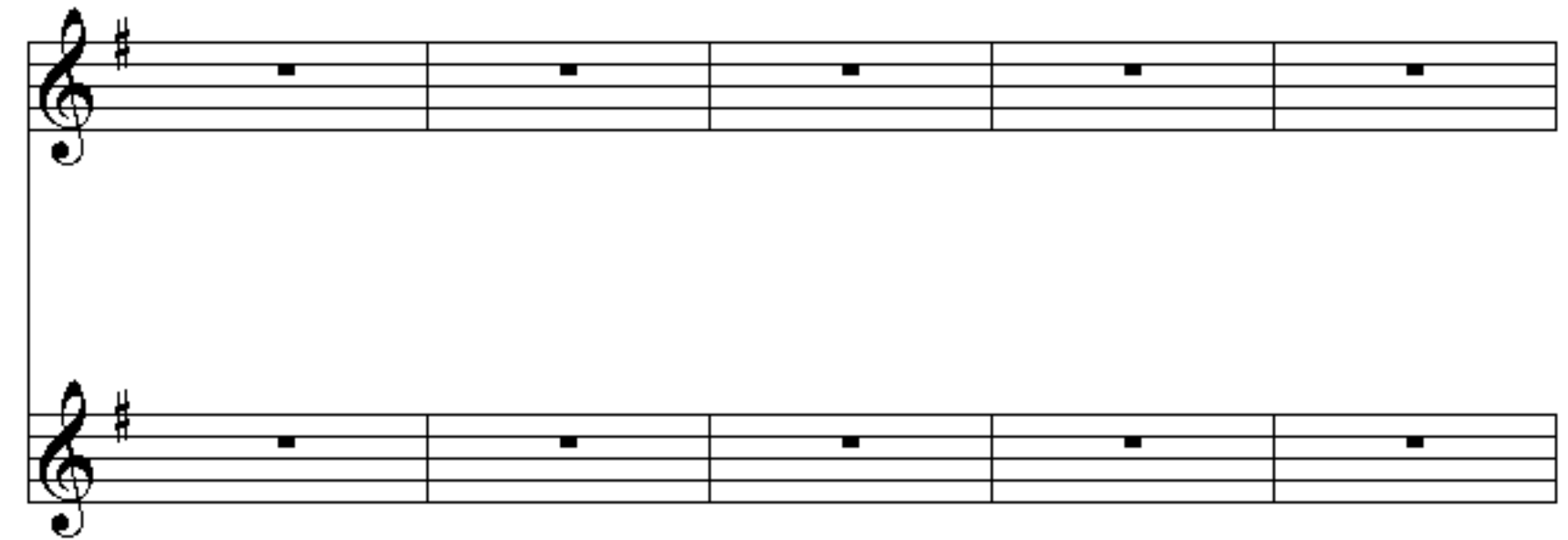
G Am Bm CM7 G Am Bm D G



C C#m7b5 D D/C Bm Bm/A Em



Am Am/G D/F# D7/C G Gaug C C#m7b5



D D/C Bm Bm/A Em Am

Musical notation for page 3, measures 1-4. The notation consists of two staves (treble clef, key signature of one sharp) with a whole note chord in each measure. The chords are: D, D/C, Bm, Bm/A, Em, and Am.

Bm CM7 A C F Em D G Am

Musical notation for page 3, measures 5-8. The notation consists of two staves (treble clef, key signature of one sharp) with a whole note chord in each measure. The chords are: Bm, CM7, A, C, F, Em, D, G, and Am.

Bm CM7 G Am Bm D G C Cm7b5 D D/C Bm Bm/A

Musical notation for page 4, measures 1-6. The notation consists of two staves (treble clef, key signature of one sharp) with a whole note chord in each measure. The chords are: Bm, CM7, G, Am, Bm, D, G, C, Cm7b5, D, D/C, Bm, and Bm/A.

Em C Cm7b5 D D/C G Gaug C C#m7b5

Musical notation for page 4, measures 7-12. The notation consists of two staves (treble clef, key signature of one sharp) with a whole note chord in each measure. The chords are: Em, C, Cm7b5, D, D/C, G, Gaug, C, and C#m7b5.

D D/C Bm Bm/A Em Am Bm CM7

Musical notation for page 5, measures 1-6. The notation is in treble clef with a key signature of one sharp (F#). The melody consists of whole notes on the staff. The bass line consists of whole notes on the staff.

A C F Em D Em Em/E^b Em/D

Musical notation for page 5, measures 7-12. The notation is in treble clef with a key signature of one sharp (F#). The melody consists of eighth notes and quarter notes. The bass line consists of eighth notes and quarter notes.

G Gaug Em Em/E^b G C C#m7^b5D

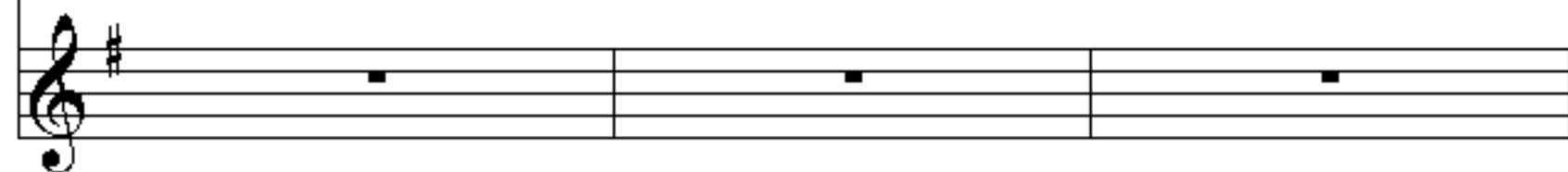
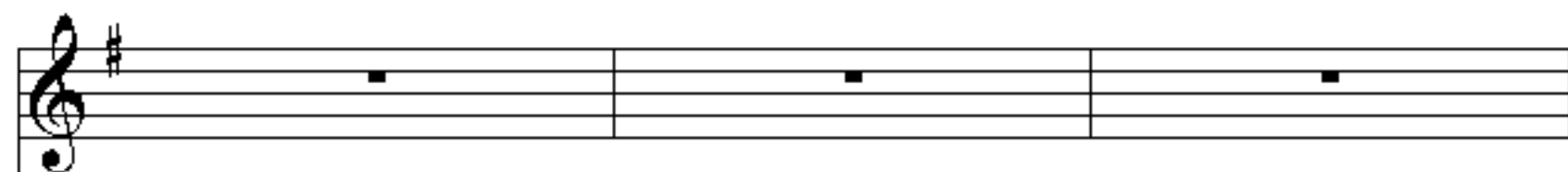
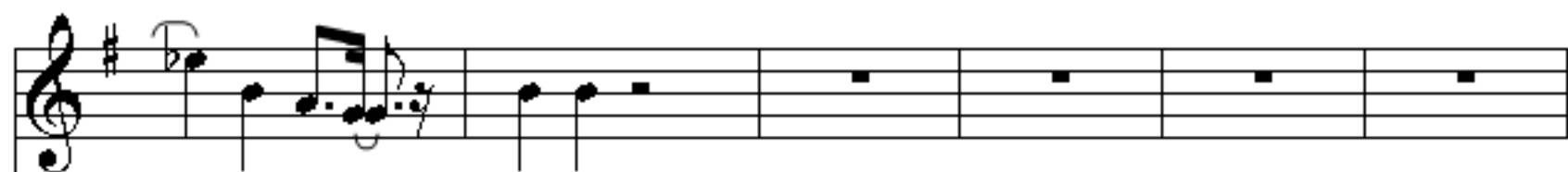
Musical notation for page 6, measures 1-6. The notation is in treble clef with a key signature of one sharp (F#). The melody consists of eighth notes and quarter notes. The bass line consists of eighth notes and quarter notes.

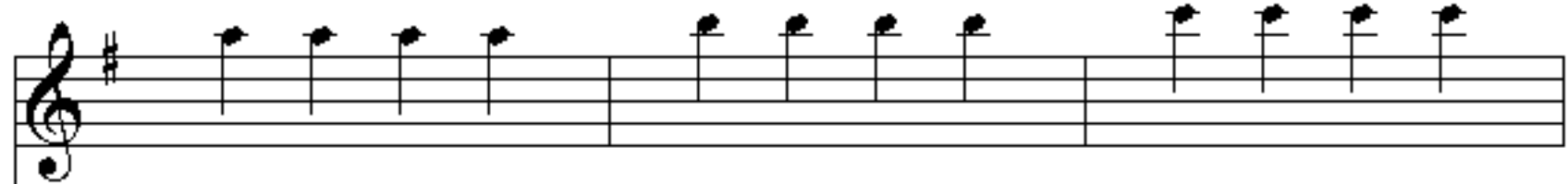
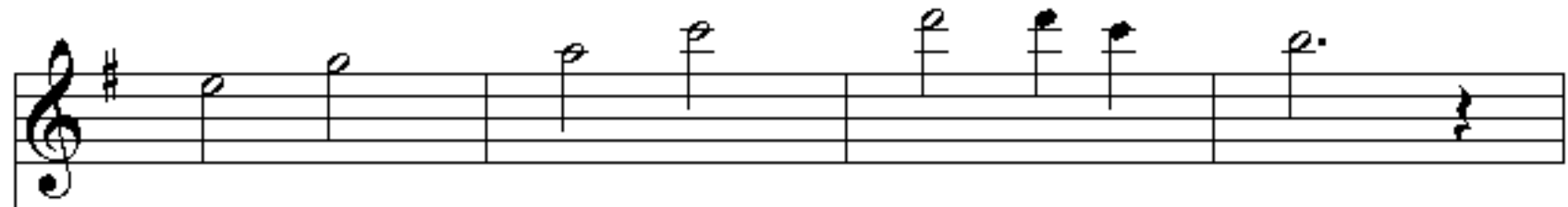
D D7 Em Em/E^b Em/D G Gaug Em

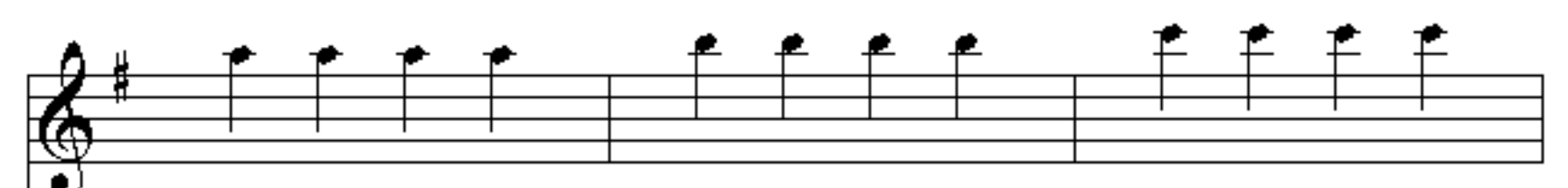
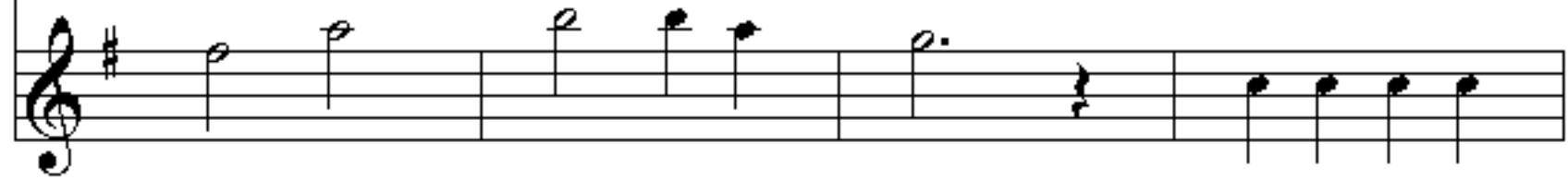
Musical notation for page 6, measures 7-12. The notation is in treble clef with a key signature of one sharp (F#). The melody consists of eighth notes and quarter notes. The bass line consists of eighth notes and quarter notes.

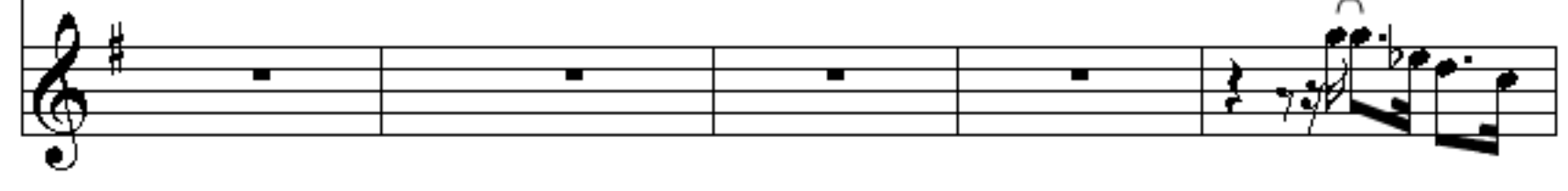
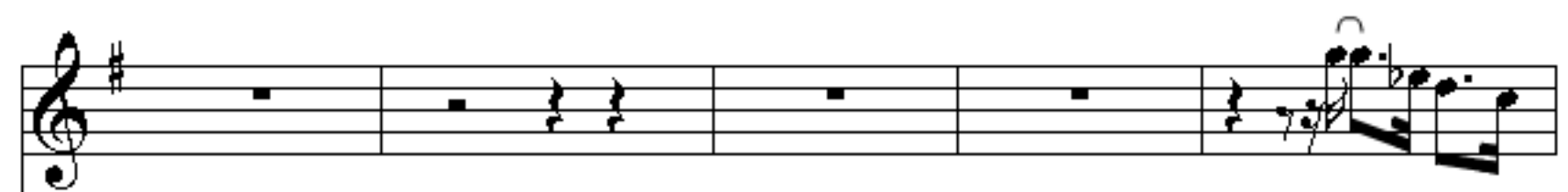
Em/E^b

G









Musical score for page 15, measures 1-2. The score consists of two staves in treble clef with a key signature of one sharp (F#). The top staff contains a melodic line with eighth notes and a quarter note. The bottom staff contains a bass line with eighth notes and a quarter note.

Musical score for page 15, measures 3-4. The score consists of two staves in treble clef with a key signature of one sharp (F#). The top staff contains a melodic line with eighth notes. The bottom staff contains a bass line with eighth notes.

Musical score for page 16, measures 1-2. The score consists of two staves in treble clef with a key signature of one sharp (F#). The top staff contains a melodic line with eighth notes, quarter notes, and triplets. The bottom staff contains a bass line with eighth notes, quarter notes, and triplets.

Musical score for page 16, measures 3-4. The score consists of two staves in treble clef with a key signature of one sharp (F#). The top staff contains a melodic line with eighth notes, quarter notes, and a half note. The bottom staff contains a bass line with eighth notes, quarter notes, and a half note.

